



Paul E. Croy
Mortgage Broker

greatpacific
MORTGAGES INVESTMENTS 

(250) 361-4775
www.greatpacificmortgage.com

Shakespeare in the Summer '11

July 6th - August 13th

the
**Comedy
of Errors**

HAMLET

On the Grounds of the
Camosun College Lansdowne Campus

Our Sponsors & Community Partners



www.vicshakespeare.com

Would You Like To Join The Society?

Date:	Name:
Email:	Phone (home):
Address:	Phone (work):
Fax:	Cell/Pager:

Individual membership is \$24 –that's only \$2 per month

Family Membership \$30

Corporate Membership \$100+

Renewal you can renew your membership for only \$16

Are you interested in Volunteering ?

Cash / Cheque

Yes / No

This is an application to join the Victoria Shakespeare Society (VSS). The VSS is a not-for-profit organization. Your information is collected to provide you with information about your interests as a member of the society as well as events and activities of the society. We do not share our membership information with other organizations for any reason.

Questions can be directed to membership@vicshakespeare.com. If mailing membership form and fee, please send to Victoria Shakespeare Society,
905 Mary Street, Victoria, BC, V9A 3W7.

Vancity

supporting
our communities

Vancity Credit Union
Douglas & Finlayson
250 519 7423
Vancity.com

things grow here

Many thanks to our generous sponsors (cash and in kind)

King Lear \$5000.00+

The Capital Regional District (CRD)

Othello \$1500.00+

HRDC Canada Student Summer Jobs Program

Big Ideas Productions

Croy and Co.

Van City

Pattison Outdoor Advertising

Hamlet \$1000.00+

Monday Magazine

Level Ground Trading

The Papery

CUPE 2081 Camosun Support Workers

Camosun College Faculty Association (CCFA)

The As You Like It \$250.00+

Hillside Mall

Lower Island NDP MLAs

C. Robert Pearson

Corporate Members \$100+

The Papery

Shepherd Books

C. Robert Pearson

Giggling Iguana Productions

Level Ground Trading

Blue Bridge Repertory Theatre

Tim Bracken Photography



www.timbrackenphotography.com

the Island's coffee sponsor

**DIRECT FAIR TRADE
COFFEE**



levelground.com

WELCOME TO THE FESTIVAL

Welcome to the ninth season of the Victoria Shakespeare Society's Shakespeare in the Summer Festival. We have come a long way since 2003. We are proud to present *The Comedy of Errors* and *Hamlet*. They are sure to draw you in and keep you entertained. We feel very fortunate this year to be given the opportunity to bring you these wonderful works of Shakespeare on the beautiful grounds of Camosun College and to be working with the Camosun College Foundation to provide bursaries to students.

In the past, the amazing efforts of the cast and crew as well as the tireless dedication of the Board of Directors, has made Shakespeare in the Summer a great success. This year is no exception and to that end I would like to thank our directors, our production and stage crew as well as our talented cast and energetic Board of Directors for once again embarking on this amazing journey. I hope you enjoy the show!

- Michael Glover, Artistic Director, Victoria Shakespeare Festival



CURRENT AND CLASSIC BOUGHT AND SOLD
QUALITY SECOND HAND BOOKS

"I'll tickle your catastrophe"

-Falstaff



shepherd books

826 Fort Street

383-3981

In memory of

Marion Elizabeth Ausssenegg



The 2011 Shakespeare festival is dedicated in loving memory to **Marion Ausssenegg**. She was a friend, a board member, and one of our brightest volunteers and supporters. Marion was taken from us too soon and we will miss her in the coming years.

Natalie Soulodre - Luciana

Having recently completed two years of singing, dancing, and acting training at the Canadian College of Performing Arts, Natalie's love of stage continues to blossom. She is thrilled to portray Luciana in *The Comedy of Errors*.



Jeffrey Theriault - Antipholus of Syracuse Antipholus of Ephesus

Jeffrey has recently graduated from CCPA. He is excited to be working with an excellent cast on a hilarious play. Finally Jeffrey would like to express his gratitude and appreciation to those who have given him love, support and encouragement while he reaches for his dreams.

		Only 4 weeks left						
		the Comedy of Errors		HAMLET				
		Sun	Mon	Tues	Wed	Thurs	Fri	Sat
July 2011	17		18	19	◆ 7:30	★ 7:30	◆ 7:30	★ 7:30
	24		25	26	◆ 7:30	★ 7:30	◆ 7:30	★ 7:30
August 2011	31	◆ 7:30	★ 7:30	◆ 7:30	★ 7:30	◆ 7:30	★ 7:30	◆ 7:30
	7	◆ 7:30	★ 7:30	◆ 7:30	★ 7:30	◆ 7:30	★ 7:30	◆ 7:30
		8	9	10	11	12	13	

youth energy & talent

2011-12 season

Love Kills
October 13 – 22, 2011
Our Spotlight on Alumni with Theatre Inconnu presents the gripping, OBIE Award-winning rock opera by Kyle Jarrow.

Rookery Nook
November 3 – 19, 2011
Witty repartee and flirtatious innuendos run amok in this classic farce by Ben Travers.

Eurydice
February 16 – 25, 2012
An eccentric retelling of the Orpheus myth from the quirky heroine's perspective, by Sarah Ruhl.

The Marowitz Hamlet
March 15 – 24, 2012
Writer/director Charles Marowitz brings humour and insight to the original with his "mashed-up" version of Shakespeare's classic.

phoenixtheatres.ca
250.721.8000

subscribe! 3 for \$36
4 plays for \$48

Photo: David Lowes





Cathy McDowell - Duchess Solina

Cathy credits people like actor and teacher John Emmet Tracy and Kate Rubin for giving her the confidence to re-ignite her dream. Recent credits include a maid in the chorus of *Annie*, and a principal/mom in *Hair*. She's honoured to be playing the Duchess in *Comedy of Errors*. Thanks to Clayton and the rest of the cast/crew for making it such a joy.

Elizabeth Marsh - Courtezan

Elizabeth Marsh is a factotum; her aimless wandering has only recently led her to acting. She has recently portrayed Hud in the musical *Hair*. She is excited to be part of the Victoria Shakespeare Society this year.



Linnea Gay Perry - Aemilia

This is Gay's third time acting in a VSS production over her five years involvement with the Society. Previously she was in *Much Ado About Nothing* and was a witch in the *Scottish play*. This year, as The Abbess, she uses her powers for good not evil. Gay is very happy to be working with Clayton and the wonderful cast and crew of *The Comedy of Errors*.



Ariel Slack - Adriana

Happy to be spending another summer reciting Shakespeare on the lawn, Ariel Slack's past acting credits include Lavinia (*Titus Adronicus*), and Fetus #3 (*Deliver Us Not!*, performed at Langham Court's ACTivate festival). She hopes you enjoy the show.



Words from the Director

HAMLET

Arguably the best known play in the English language. Its many challenges make any production of it exciting to do. However, for a play to have survived and been almost continually produced since it was written at the turn of the 17th century, there must be something enduring about it. It is the story! It survives endless re-telling and re-examination.

For this performance we are looking at the psychological thriller and personal drama aspects, and at finding the action that drives the story forward. Approaching the play as a thriller, in my way of thinking, allows the events to be happening now as opposed to a tragedy where it feels like the events have already happened. Further by playing Hamlet as a woman, I hope that people will re-examine the relationships she has with her father, her mother, Ophelia and all the other characters with whom she interacts. I think that these relationships are the force behind all the actions that Hamlet feels compelled to do. I hadn't thought about the relationship dynamics of the play until I heard an interview with three actors who had played Hamlet at Stratford; they got into a discussion about how it was a play about two dysfunctional families. The next time I dove into the script I saw all these little family conflicts that still resonate strongly today. And despite years of performance, I hope we can get people to listen and watch the story from a fresh perspective.


We proudly support our Victoria arts community!

Visit us online to find out how we can support your writing projects, and get up to \$200 off through this ad.

<http://welcome.friesenpress.com/shakespeare>

FriesenPress

Suite 300 - 852 Fort Street Victoria, BC, Canada V8W 1H8 • Toll Free: 1-888-378-6793
CANADA'S LEADING SELF-PUBLISHER

1971-2011
40 DAMN FINE YEARS
Student Union Building, UVic
www.cinecenta.com

Words from the Director

THE COMEDY OF ERRORS

Aegeon and his wife Aemelia, their twin sons - both named Antipholus - along with their twin servants - both named Dromio - are separated in a ship wreck. One son and one servant end up with Aegeon, and the other son and servant, together with Aemelia, are separately rescued. This son and servant (the ones rescued with Aemelia) are then stolen from her; prompting Aemelia to become a nun in Ephesus. The son and servant whom she loses, end up moving to Ephesus, where Antipholus marries Adriana and settles into domestic life with his servant Dromio. Meanwhile the other Antipholus and Dromio grow up with Aegeon in Syracuse. As a young adult, this Antipholus decides to head off with his servant Dromio in search of his lost brother and mother. Seven years later, Aegeon leaves Syracuse, in search of his son. They all end up in Ephesus – and the play begins. A word of caution: don't try too hard to make sense of the confusion that results from two sets of identical twins – unbeknownst to each other – ending up in the same city; wearing virtually the same clothes, and having the same names. Just enjoy the mess, and watch the master of English stage dialogue try to unravel the premise he has created.

screenactors studio

845 Fisgard St, Victoria B.C. V8W 1R9. Ph: 250-595-1339.
www.screenactors.ca email: screenact@shaw.ca



Alasdair Howie - Angelo

Alasdair has been acting for as long as he has been able to stand upright. Currently he is pursuing theatre and other equally improbable careers here in Victoria.

Madeline Hunter - Pinch / Dromio body double

Madeline Hunter just completed her third and final year at the Canadian College of Performing Arts. Recent credits include Eric in *Lord of the Flies* and Adrianna in *Comedy of Errors* with CCPA's Company C, and a super in POV's *Vanessa*.



Matt McLaren - Second Merchant

A young actor and third year student of Uvic, Matt is delighted to finally take place in a Shakespeare play where he does not get murdered. Past credits include *Richard III*, *Spring Awakening* and *The Laramie Project*. He hopes you enjoy the play and apologizes if you are distracted by his devilish goods looks.

Image Unique Quantum Biofeedback Therapy

Karen Levis 250-385-HEAL (4325)

*** Therapy for Life ***

Seeking an integrated, whole-body approach to well-being? This therapy looks towards early detection & prevention of symptomatic unease; provides organ & body system balancing; nutrient guidance and assistance with fatigue & stress for resolution.

Bring in this advertisement for 50% off your first visit.

Call for your appointment today!



CAST - THE COMEDY OF ERRORS

**Julian Cervello - Dromio of Syracuse
Dromio of Ephesus**

Selected credits include *Pornography* (Theatre Inconnu), *The Duchess of Malfi* (Vile Passeist Theatre), *Our Town* (Souldpepper Theatre), *Macbeth* (Tempest Theatre), *Hamlet* and *Julius Caesar* (Hart House Theatre). Julian will premier his one-man show *Canterbury Cocktails* at the upcoming Victoria Fringe Festival.



Geoffrey J. Davidson - First Merchant/soldier

This is the latest in a long line of plays Geoff has done with VSS. He has appeared in *Hamlet* (earlier version), *MacBeth*, *Much Ado About Nothing*, *Julius Caesar*, and *Richard III*.



**John Demmery Green - Officer
Dromio's voice within
Antipholus body double**

John needed a way to keep out of trouble this summer, so he chose Shakespeare. He is excited to contribute to his community with a positive attitude. He previously appeared in the VSS *Twelfth Night* in 2009 as Andrew Aguecheek.



Ariel Hansen - Servant

Ariel has always loved to perform. Perhaps you caught her flying high as Peter Pan at the Metro last year. In September she will be leaving Victoria to attend acting school in Vancouver.



K.C. Hingley - Aegeon

This is K.C.'s first production with VSS and his debut Shakespearean performance. He was last seen in Kaleidoscope's *The Rocky Horror Picture Show*. He also sings and plays bass in his Pink Floyd tribute band, Pigs.

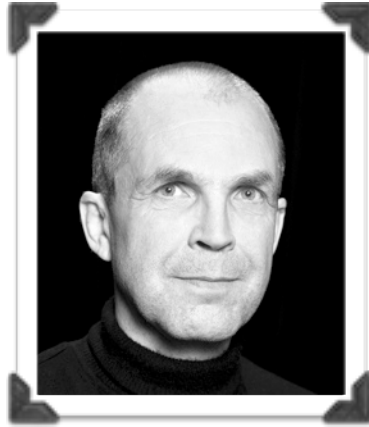


*Proud Supporters
of Shakespeare
in the Summer*

669 Fort St. 382-1669

CLAYTON JEVNE

Clayton has been at the helm of Victoria's Theatre Inconnu for almost 30 years, where he has been involved in over 80 shows as director, actor, or designer. His solo work has entertained and challenged audiences throughout Canada and the U.S. and in Mexico and Europe. This fall Clayton has been invited to present his solo performance of *Moscow Stations* (directed by Graham McDonald at Theatre Inconnu) at New York's United Solo Festival. He has also performed locally with The Belfry and Kaleidoscope Theatres, and will re-direct Theatre Inconnu's production of Kyle Jarrow's rock musical *Love Kills* as part of UVic Phoenix Theatre's 2011-12 mainstage season. Clayton has previously directed *The Tempest* for Shakespeare in the Summer, and is thrilled to be back again with this great bunch of people. Thanks to all cast and crew for their brilliant and dedicated work!



Your South Island MLA Team



Rob Fleming, MLA
Victoria-Swan Lake
rob.fleming.mla@leg.bc.ca
Tel: 250-360-2023

Carole James, MLA
Victoria-Beacon Hill
carole.james.mla@leg.bc.ca
Tel: 250-952-4211

John Horgan, MLA
Juan de Fuca
john.horgan.mla@leg.bc.ca
Tel: 250-391-2801

Lana Popham, MLA
Saanich South
lana.popham.mla@leg.bc.ca
Tel: 250-479-4154

Maurine Karagianis, MLA
Esquimalt-Royal Roads
maurine.karagianis.mla@leg.bc.ca
Tel: 250-479-8326

Supporting the Arts in our Community

Now open for lunch above our dinner location.



the mint

1414 Douglas Street,
Victoria, BC V8W 2G1
250.386.mint (6468)
www.themintvictoria.com

this Summer at the Belfry

JULY 5 - 17

RIDE THE CYCLONE

by Jacob Richmond, lyrics and music by
Brooke Maxwell and Jacob Richmond
Atomic Vaudeville

*"...probably the most uproarious and
outrageous piece of musical theatre
Canada has ever produced."*

GLOBE AND MAIL



AUGUST 3 - 21

MOM'S THE WORD: REMIXED

by Linda Carson, Jill Daum,
Alison Kelly, Robin Nichol, Barbara Pollard
and Deborah Williams

*"You'll laugh. You'll cry. Your heart will
be full."* THE GEORGIA STRAIGHT



Tickets & Information 250-385-6815 or belfry.bc.ca/tickets/
1291 GLADSTONE AVENUE, VICTORIA

Belfry
Theatre

Bill Nance - Polonius / Sailor

Bill returns to The Bard for the first time since 2004. Past Shakespeare productions include *The Taming Of The Shrew*, *The Merchant Of Venice*, and *Love's Labour's Lost*. Bill was a guest improviser in Episode 20 of *Sin City* and can be found on the stage of The Victoria Event Centre at *Phillip's Comedy Night*. He has been an improv actor and director for over twenty years.



Alan Venn - Player queen/ Marcellus/ Gravedigger/ clown 1/ serious king

Alan is a member of Target Theatre for Seniors. The Shakespeare plays he has appeared in are two renditions of *A Midsummer Night's Dream*, *Twelfth Night*, *A Comedy of Errors*, and *Loves Labours Lost*.



PACIFIC ROLLSHUTTERS & AWNINGS
 Superior Solutions for Your Heat, Light & Security Needs.

#2 - 2745 BRIDGE ST
 VICTORIA, BC
 V8T 4T1

See Company Info page for contact information and details on out-of-town shipping

DAVID MACPHERSON

David has been directing for over 20 years and has tackled such great scripts as Michel Tremblay's *En Pièces Détachées*, David Mamet's *Oleanna*, Tony Kushner's *Angels in America*, George F. Walker's *Love and Anger*, and Matt Stone & Trey Parker's *Cannibal: The Musical* and now this little masterpiece. In addition to directing, David is a theatre teacher, a writer of three plays, founder/artistic director of Where's Noonan? Productions, a story-teller and performer who is currently enjoying a life of touring to schools across the country as part of the marvelous Story Theatre Company. He would like to dedicate Hamlet to the ghost of his father... who still haunts him today.



duo perpetuo
 CLASSICAL FOLK LIVE MUSIC

Margaret Gerard 250-380-6350
 250-477-8468

NEW SEASON. NEW LOOK.

THE MELVILLE BOYS	SEP 28 - TO - OCT 15 2011	RABBIT HOLE	MAR 07 - TO - MAR 24 2012
BEAUTY QUEEN OF LEENANE	NOV 16 - TO - DEC 03 2011	1959 Pink Thunderbird Convertible	APR 25 - TO - MAY 12 2012
THE DROWSY CHAPERON	JAN 18 - TO - FEB 04 2012	the Foreigner	JUN 13 - TO - JUN 30 2012

Book your 2011/12 Season Passes now.

Box Office & Info 250.384.2142
 805 Langham Court (at Rockland)
www.langhamtheatre.ca

LANGHAM COURT THEATRE

PRODUCTION CREW

Michael Glover - Artistic Director

Michael is a veteran of eight Shakespeare Festivals. In 2004, he played the clown Don Adriano de Armado in *Loves Labour's Lost*, in 2006 he played the villain Antiochus in *Pericles, Prince of Tyre* and *Hastings* in *Richard III* in 2010. He runs a dual life as the head of the Shakespeare Festival and as Student Services Coordinator for the Camosun College Student Society. His thanks go out to all the many people who have put faith in him and Shakespeare in Victoria.



Ryan Levis - Assistant to the AD

Ryan is proud to present this fine festival. Strictly Shakespearean, his VSS credits include *Tranio*, from last year's *Taming of The Shrew, Julius Caesar*, directed by Ian Case in 2009, and *Claudio* from our 2008 *cowboy rendition*. Beyond the summer festival he's played *Othello, Titus Andronicus* and, opening July 19th, *Henry V*. This is his fourth year with the VSS, he has raised \$10000 for this society and, with a lot of help, he just might be the VSS AD this September. He promises much more classical theatre as life goes on. AND! Vote Ryan Levis to be on the APPRENTICE at <http://apprentice.strutta.com/entry/180879>.



Denise Brown - Production Manager

Denise has been involved with Shakespeare in the Summer one way or the other since its conception. She wishes the cast and crew a most amazing summer! Thank you for supporting our festival



Sammie Gough - FOH Manager / Volunteer Coordinator

hails from Australia and has been an active member of the Victoria arts community since she arrived on this fine island two years ago. She works for Intrepid Theatre as Publicity and Development Manager, and organizes the yearly DIY craft showcase *IconoCraft*.



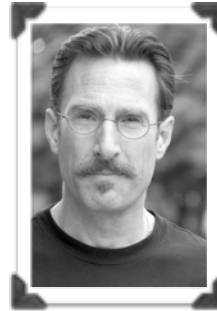
Tim Martin - Player king/Rozencrantz/ Gravedigger 2/other clown/ Osric/ Serious

Recently graduated from Belmont Secondary School, Tim has been pursuing a career in actor. While he has much experience from his many acting classes and performances in them, including the Belmont PlayWrights Festival, this will be his first major performance.



Mur Meadows - Lucianus/ Barnardo/Priest/ Guildesterne/player king/ villain

Mur is honoured to be appearing in this year's Shakespeare Festival. He was recently in Langham Court's, *Isn't it Romantic*, and *The Memory of Water*, and is presently producing his own original play, *The Return of Love*, for The Fringe.



Sarah Anne Murphy - Horatio

Originally from St. John's, NFLD, Sarah Anne is a recent graduate of the Canadian College of Performing Arts. She is thrilled to be working with such a terrific cast and crew on this production and hopes you enjoy the show!





RUFFELL & BROWN

INTERIORS

For a free in-home consultation call

250-384-1230

- Faux Wood Blinds
- Wood Blinds
- Venetian Blinds
- Vertical Blinds
- Pleated Shades
- Cellular Shades
- Roman Shades
- Woven Woods
- Roller Blinds

- Sheers
- Draperies
- Valances
- Drapery Rods
- Interior Shutters
- Motorization
- Upholstery
- Installation
- Repair and Service

1 - 2745 Bridge Street Victoria, BC V8T 4T1 www.ruffell-brown.com



WINNER
business of the year (11-25 employees) award
greater victoria business awards 2010



WINNER
2009 & 2010
BEST OF THE CITY
WINDOW COVERINGS



BBB
ACCREDITED
BUSINESS

THE CAST - HAMLET



Noelle Antonsen - Ophelia

Noelle Antonsen has been performing in Victoria since she was very small, including *Beauty and the Beast* (VOS), *Urinetown* (Haeling Love Productions), and many school musicals at Oak Bay High School. She has just completed her first Year at CCPA and is looking forward to her second.

Melissa Blank - Hamlet

Melissa is a graduate of the Mount Royal Theatre program and the Canadian College of Performing Arts. Melissa feels so honoured to be playing this brilliant, challenging, famous role. She would like to thank her family for their support and thank David for his patience and his brilliance.



©DAVID LOWES

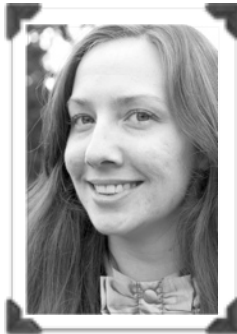
Perry Burton - Claudius

This is Perry's first time performing Shakespeare and the experience has created a deeper appreciation for 'The Bard'. Thank you to the wonderful cast and crew.



Emily De Korte - Gertrude

Emily is thrilled to be part of the Summer Shakespeare Festival. A lifelong lover of the Bard, she is proud to be in this production with so many wonderful people.



Adam Holroyd - Laertes

Adam has worked with the Victoria Shakespeare Festival three years running. Last year he played *Richard III's* lucky Catesby, and before that, the clueless twin Sebastian in *Twelfth Night*. Adam has been on the Victoria stage for ten years now and is somewhat amazed that he's stuck with anything this long.



Theodore Sherman - Production Assistant

Theodore has been working feverishly to accomplish the impossible. As it turns out the impossible is possible with him around. (Modesty may not be his strong suit)



Kent Martin - Asst. Technical/Festival/Marketing Director & Media Director.



A third year student enrolled at University of Victoria Theatre program Studying; Technical & Lighting Design. Its Kent's forth year with Victoria Shakespeare Society as sound designer and assistant tech director and this year he's taken on the challenge of assisting Michael Glover and Ryan Levis with the operations of the summer festival. Kent would like to thank everyone that helped make the summer festival possible

Paul Croy - Festival Technical Director/Festival Lighting Designer

Paul became involved with Shakespeare in the Summer about eight years ago. Starting first as a lighting designer and then four summers ago assuming the role of Festival Tech Director. Many thanks to all the keen and talented individuals who are committed to working together, as a team, to build a sustainable Bard Festival in Victoria. A special thanks to our audience members who return each summer and give validation to our collective efforts, for without you this festival would not be possible. Paul is the past President of The Victoria Shakespeare Society.



Sylvia Farr - Stage Manager for Hamlet

Sylvia has grown up with theatre, and has immersed herself in theatre production for the past year. She has worked on shows such as *The Hobbit* and *Sin City* with technical theatre and will be attending Ryerson University for their theatre production program in the fall. She would like to thank the wonderful cast and crew of *Hamlet* for all of their work.





Harmony Moore - Costume Designer for Hamlet

Harmony is a graduate of the UVIC Theatre program, a member of IATSE and has worked in costume design with the Banff Centre and Langham Court, VOS, as well as other local theatre groups. This is her first show with Shakespeare festival, *Hamlet* has been a pleasure!

Karen Croquet - Stage Manager for Comedy

Karen has worked behind the scenes in a variety of roles. This is her first foray into stage management. She has previously worked as a lighting technician for *Atomic Vaudeville* and a front-of-house manager for the Victoria Fringe Festival.



Patricia Reilly - Costume Designer for Comedy

This is Patricia's first season with the Victoria Shakespeare Society. Patricia is a recent graduate of the University of Victoria's Theatre Design program. Previous costume design credits include *Loot* and *Hank Williams: The Show He Never Gave* for Blue Bridge Repertory Theatre's 2010 season, and the co-costume design of *Yerma* for the University of Victoria.



Canterbury Cocktails

Victoria Fringe Festival Aug. 25 - Sept. 4, 2011

scrumpyproductions.com



Victoria Event Centre

...where it ALL happens!

An accommodating multi-purpose downtown venue for small arts & entertainment groups, cultural organizations and non-profit communities to hold their shows/performances, fundraisers and community celebrations.

FULL SOUND & THEATRE LIGHTING
LARGE STAGE & DANCE FLOOR

LICENSED
250 CAPACITY
QUALIFIED
EVENT STAFF

www.1415broad.ca

250.380.1280 bookings@1415broad.ca

We're Building You A Better Hillside

Some of our amazing stores include:
Sears, Zellers, Shoppers Drug Mart, Thrifty Foods,
Bolen Books, Starbucks, Tim Hortons and more!



Hillside

Proud to be a
community partner.

www.hillsidecentre.com